



# Tips Tricks

## Great combination of CNC machines and Zeta P2



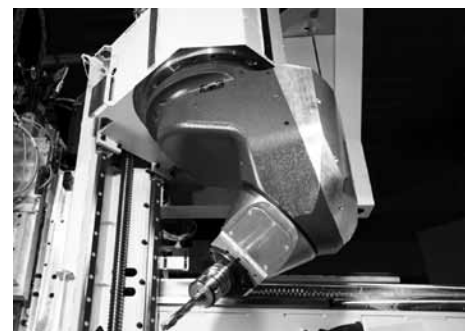
### Nesting machines



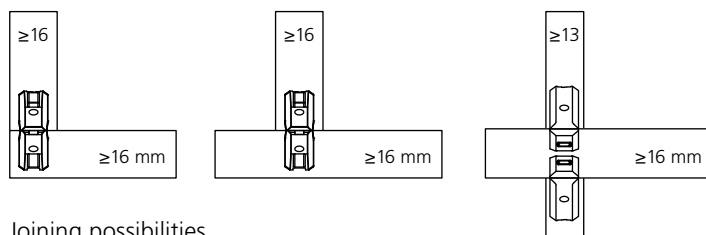
### CNC with 3 axes without angle aggregate



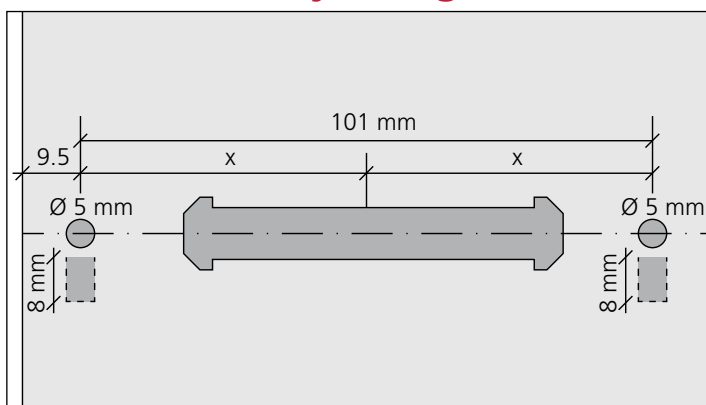
### CNC with 5 axes without angle aggregate



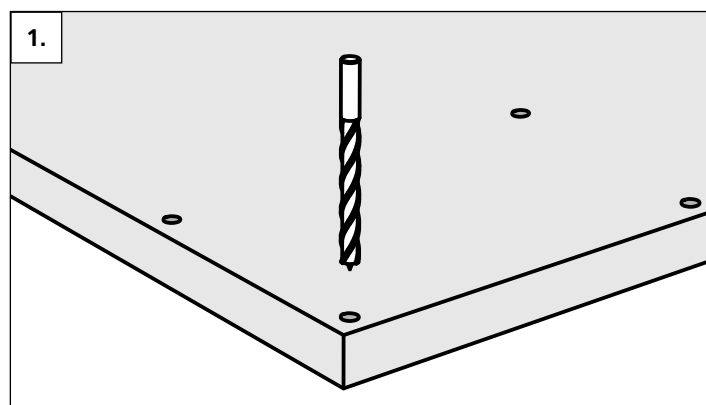
### Zeta P2



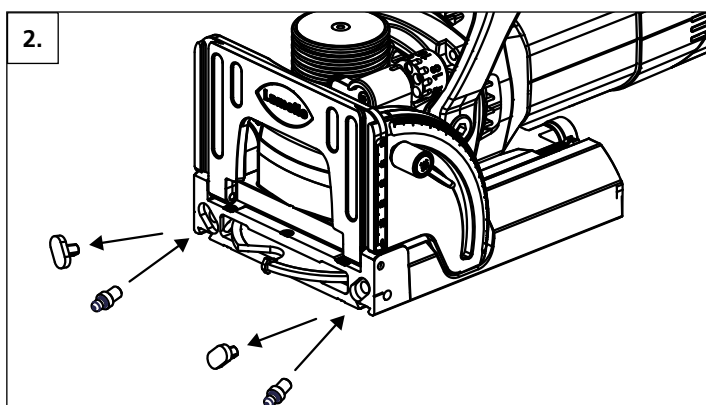
### How it works: P-System groove in the surface



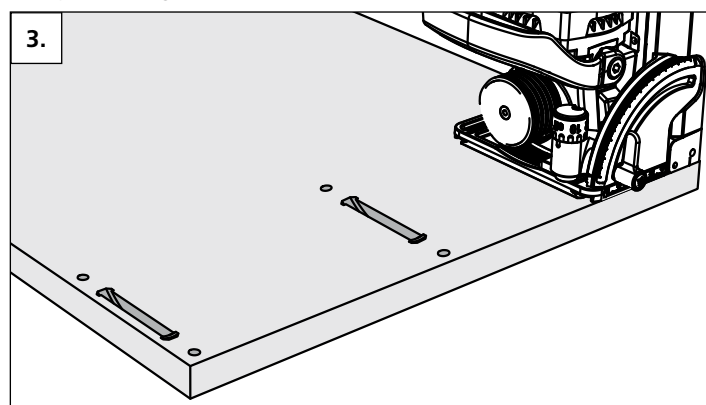
Position of drill holes,  $\varnothing 5$  mm /  $\varnothing 8$  mm



Drill positioning holes with a CNC,  $\varnothing 5$  mm /  $\varnothing 8$  mm

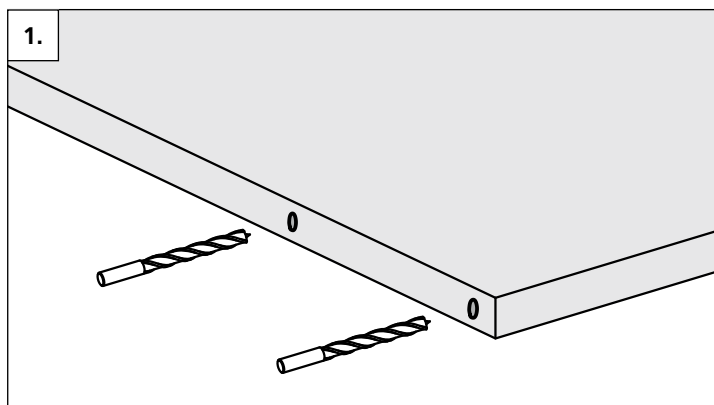


Insert the positioning pins into the Zeta P2

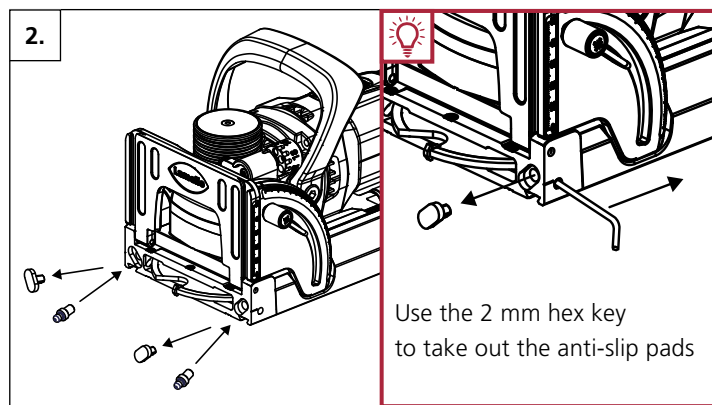


Position the machine in the holes

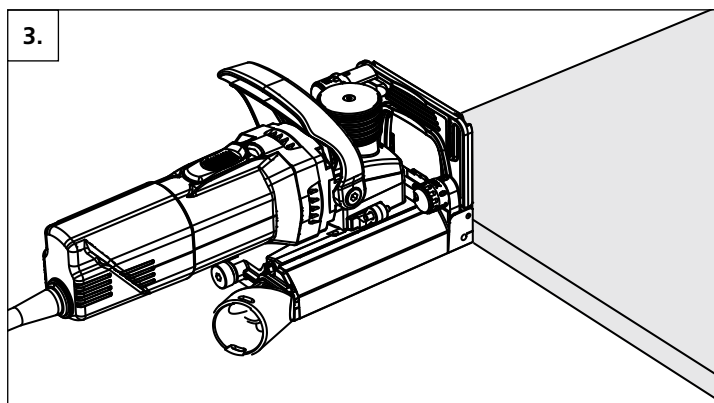
## How it works: P-System groove in the edge



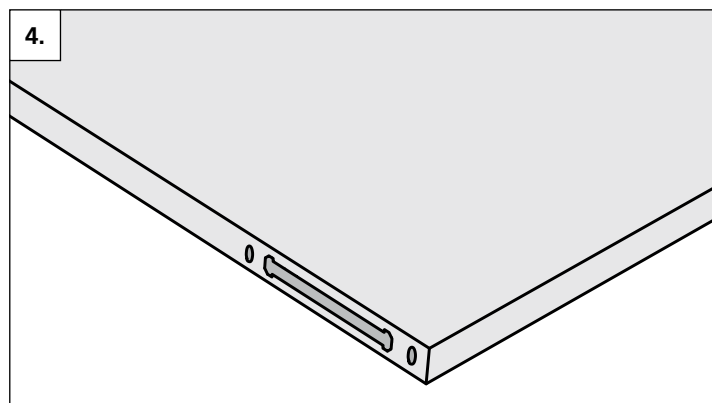
Drill positioning holes on a CNC,  $\varnothing$  5 mm,  $\varnothing$  8 mm into the edge



Insert the positioning pins into the Zeta P2



Position the machine in the holes



Finished P-System groove



Zeta P2	Art.No.
with carbide tipped profile groove cutter.....	101402
with diamond tipped profile groove cutter.....	101402D

Positioning pin Zeta P2	Art.No.
$\varnothing$ 5 mm, 1 pair .....	251048
$\varnothing$ 8 mm, 1 pair .....	251066

Tenso P-14	Art.No.
80 pairs .....	145415
300 pairs .....	145425
1000 pairs .....	145435



Clamex P-14	Art.No.
80 pairs .....	145334
300 pairs .....	145346
1000 pairs .....	145356

Clamex P Medius 14/10	Art.No.
80 pairs .....	145370
300 pairs .....	145371
1000 pairs .....	145357

Clamex P-10	Art.No.
80 pairs .....	145372
300 pairs .....	145373
1000 pairs .....	145374



Manufacturer:  
**Lamello AG**  
**Verbindungstechnik**  
 Hauptstrasse 149  
 CH-4416 Bubendorf  
 Tel. +41 61 935 36 36  
 Fax +41 61 935 36 06  
 info@lamello.com  
 www.lamello.com